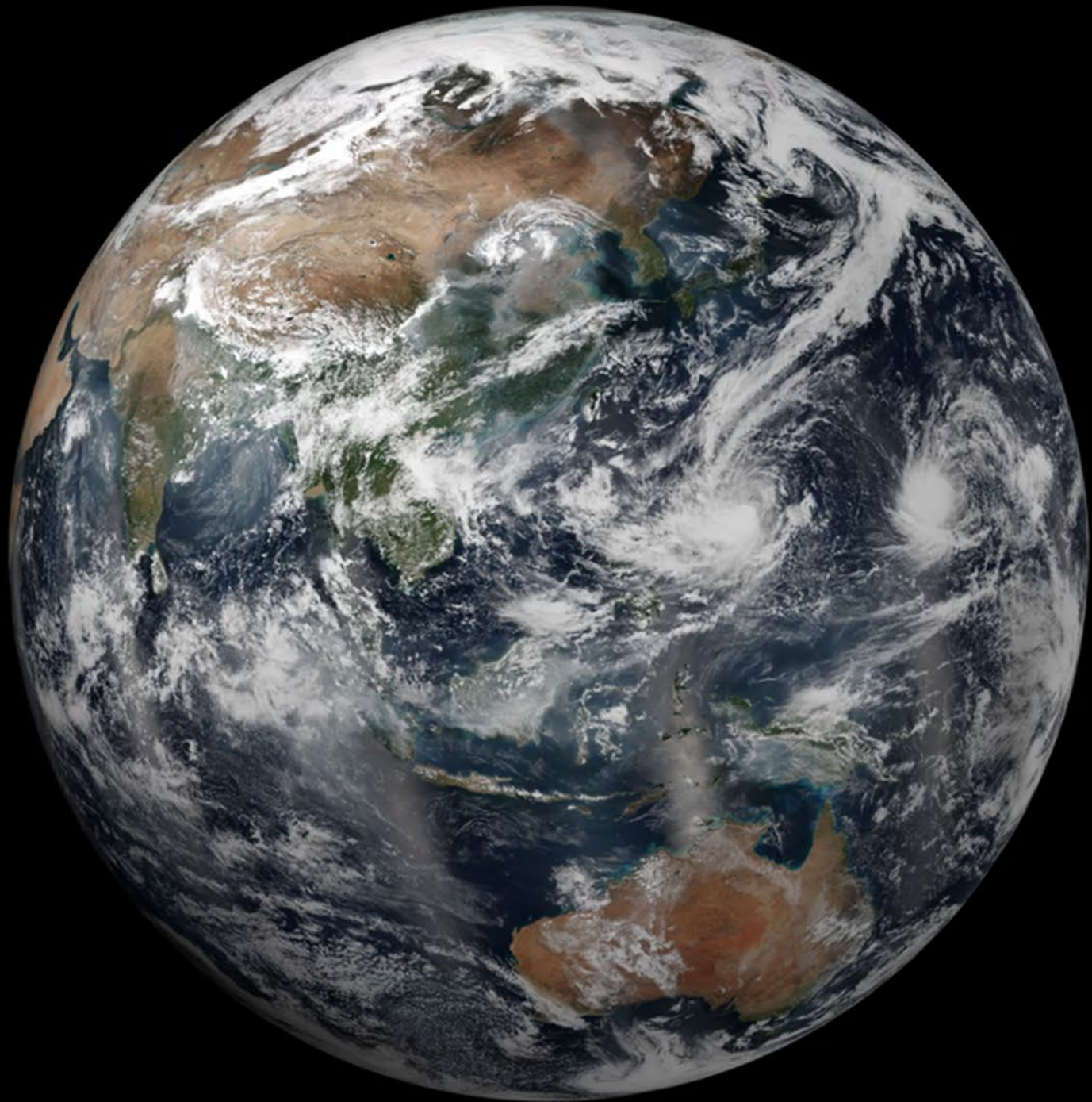


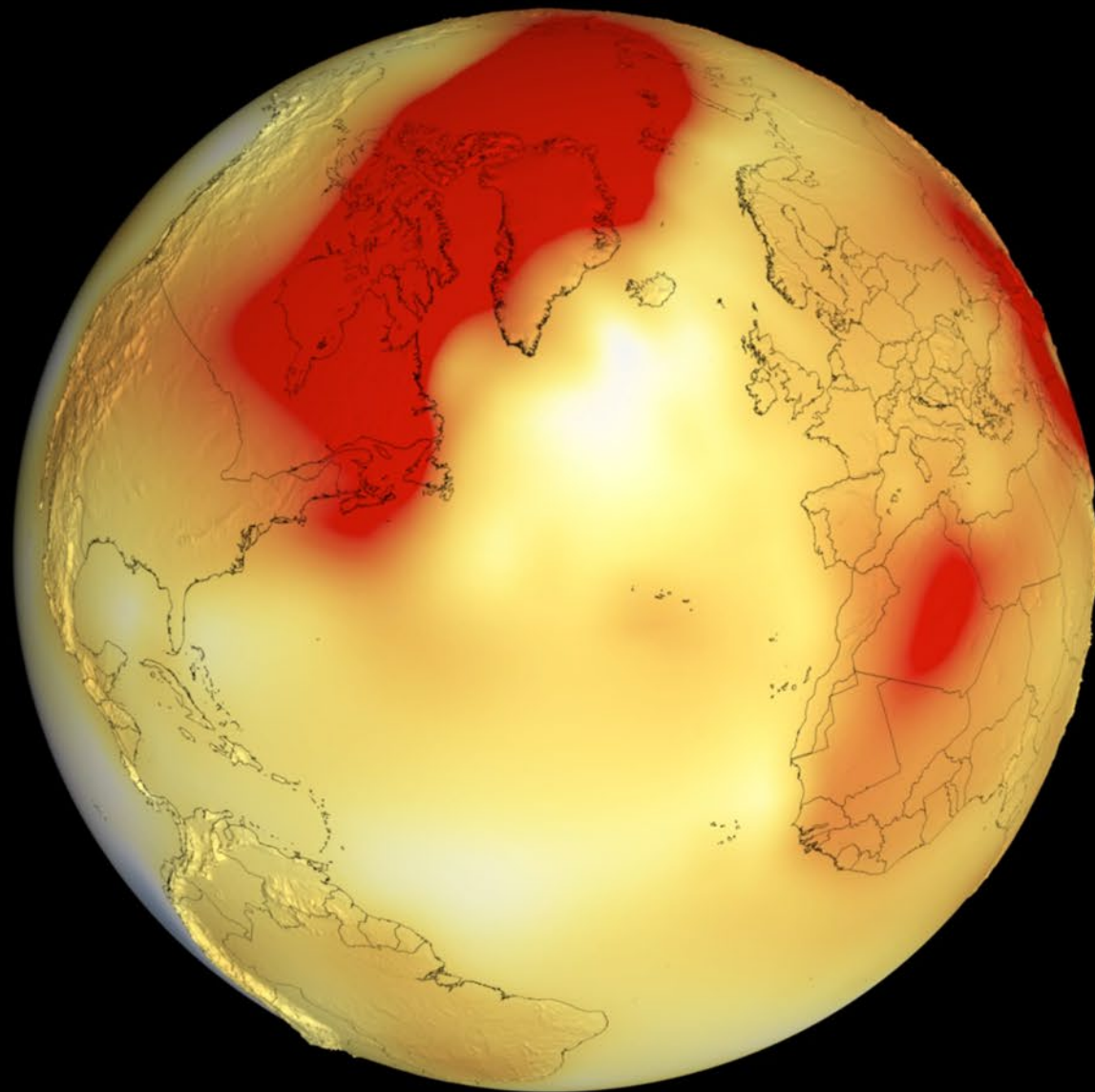
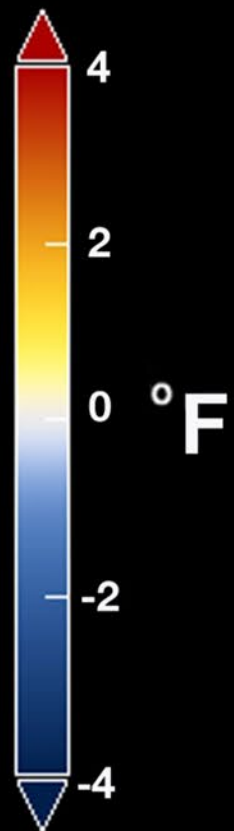




Voyager 1, May 1990, 6 billion km



2021



UNIVERSITIES & THE PLANET



Education

Resources

Climate Change

Food

Energy

Inclusion

Mobility

Waste

Social Justice



Working Group CLIMATE CHANGE - guidelines



LINEE GUIDA OPERATIVE PER LA REDAZIONE
DEGLI INVENTARI DELLE EMISSIONI DI GAS SERRA
DEGLI ATENEI ITALIANI

Guidelines for CO₂
emission inventory in
Universities

RUS - Gruppo di Lavoro "Cambiamenti Climatici"



RETE DELLE UNIVERSITÀ PER LO SVILUPPO SOSTENIBILE
Gruppo di Lavoro Cambiamenti Climatici

LINEE GUIDA PER LA REDAZIONE DEI
PIANI DI MITIGAZIONE DELLE EMISSIONI
DI CO₂ DEGLI ATENEI

Guidelines for CO₂
mitigation plan in
Universities

Coordinatore
Prof. Stefano Caserini c/o Servizio Sostenibilità del Politecnico di Milano
02 2399. 9318 \ 9354 – rus-cambiamenticlimatici@polimi.it



RETE DELLE UNIVERSITÀ PER LO SVILUPPO SOSTENIBILE
Gruppo di Lavoro Cambiamenti Climatici

LINEE GUIDA E BUONE PRATICHE PER
L'ADATTAMENTO AI CAMBIAMENTI
CLIMATICI DEGLI ATENEI ITALIANI

Guidelines and best practises
for adaptation to climate
change in Universities

Coordinatore
Prof. Stefano Caserini c/o Servizio Sostenibilità del Politecnico di Milano
02 2399. 9318 \ 9354 – rus-cambiamenticlimatici@polimi.it



Working Group **RESOURCES AND WASTE** - sub groups topics

**1. Guidelines Waste Management:
temporary storage of waste**



Coordination: Ponte (UniTN)

2. Donation/transfer of goods



Coordination: Bragagnolo (UniVE)/
Prandstraller (UniBO)

3. Good Practices



Coordination : D'Arrico (PoliMI)
(with the support of Badalucco (IUAV)

4. Separated waste collection



Coordination : De Feo (UniSA)

**5. Waste and Good Practices during
the Covid-19 emergency**



Coordination : Vagliasindi (UniCT)
(with support of Siciliano (UniCal)

6. Indicators for resources and waste management

+ integrated sub work group with WG Food



Coordination: Perotto (PoliMI)

Contact persons: Tecco (UniTO) and Sezenna (PoliMI)



Working Group FOOD – practices towards sustainable nutrition in Universities



©Margherita Brunori

Subgroup activities:

Sharing experiences, relationships with stakeholders, dissemination of knowledge, vademecum

- **Production** (Ex: farms, vegetable gardens)
- **Distribution** (Ex: canteens, bars, catering, vending machines, water dispenser)
- **Consumption** (Ex: eating habit, food knowledge, food education and practices: spaces and times, purchasing groups)
- **Post-Consumer** (Ex: waste, against Waste)
- **Indicators and monitoring** (Ex: surveys, research, data analysis)